



AF-4 Polyclonal Antibody

Catalog No	YP-Ab-16926
Isotype	IgG
Reactivity	Human;Mouse
Applications	IHC;IF;WB;ELISA
Gene Name	AFF1
Protein Name	AF4/FMR2 family member 1
Immunogen	The antiserum was produced against synthesized peptide derived from human AF4. AA range:1-50
Specificity	AF-4 Polyclonal Antibody detects endogenous levels of AF-4 protein.
Formulation	Liquid in PBS containing 50% glycerol, 0.5% BSA and 0.02% sodium azide.
Source	Polyclonal, Rabbit,IgG
Purification	The antibody was affinity-purified from rabbit antiserum by affinity-chromatography using epitope-specific immunogen.
Dilution	WB 1:500-2000 IHC: 1/100 - 1/300. ELISA: 1/20000.. IF 1:50-200
Concentration	1 mg/ml
Purity	≥90%
Storage Stability	-20°C/1 year
Synonyms	AFF1; AF4; FEL; MLLT2; PBM1; AF4/FMR2 family member 1; ALL1-fused gene from chromosome 4 protein; Protein AF-4; Protein FEL; Proto-oncogene AF4
Observed Band	130kD
Cell Pathway	Nucleus .
Tissue Specificity	Epithelium,PCR rescued clones,Placenta,
Function	disease:A chromosomal aberration involving AFF1 is associated with acute leukemias. Translocation t(4;11)(q21;q23) with MLL/HRX. The result is a rogue activator protein.,similarity:Belongs to the AF4 family.,
Background	This gene encodes a member of the AF4/ lymphoid nuclear protein related to AF4/Fragile X E mental retardation syndrome family of proteins, which have been implicated in childhood lymphoblastic leukemia, Fragile X E site mental retardation, and ataxia. It is the prevalent mixed-lineage leukemia fusion gene associated with spontaneous acute lymphoblastic leukemia. Members of this family have three conserved domains: an N-terminal homology domain, an AF4/ lymphoid nuclear protein related to AF4/Fragile X E mental retardation syndrome domain, and a C-terminal homology domain. The protein functions as a regulator of RNA polymerase II-mediated transcription through elongation and chromatin remodeling functions. Through RNA interference screens, this gene has been shown to promote the expression of CD133, a plasma membrane glycoprotein



required for leukemia cell survival. Alternative splicing results in mu

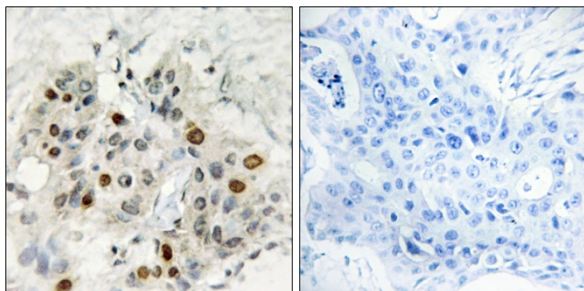
matters needing attention

Avoid repeated freezing and thawing!

Usage suggestions

This product can be used in immunological reaction related experiments. For more information, please consult technical personnel.

Products Images



Immunohistochemistry analysis of paraffin-embedded human breast carcinoma tissue, using AF4 Antibody. The picture on the right is blocked with the synthesized peptide.